

Document Version 2.0



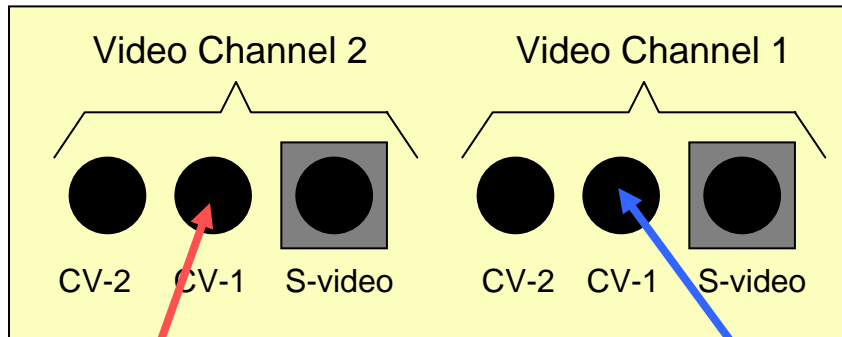
Brick-2 Videowall Processor
Example Video Picture Possibilities

Copyright Media Technologies Ltd, 2005 - 2007

Overview

- A single Brick-2 processor can display one big picture on the array switched from up to 8 video sources.
- The big picture can be any magnification (1x2, 2x2, 3x3, 4x4, ...) but only ONE magnification can be selected at one time.
 - Exception is x1 image which can be displayed any time on individual monitors
- You can display single (x1) images from two input sources on different monitors.
- You can also display different colour washes on individual monitors.
- There are also some other effects like black and white that can be selected on individual monitors.
- This technical note describes some of the possibilities for an example 4x5 video wall array implemented using one 25-channel processor. But the effects are applicable to any video wall.
- Switching between these different configurations is very simple and the processor can do it automatically with no PC being needed after installation.
- Contact us if you have any queries

Connection of two video sources



Processor 1 (25-channel)



Source B



Source A

Example Video Display - 1



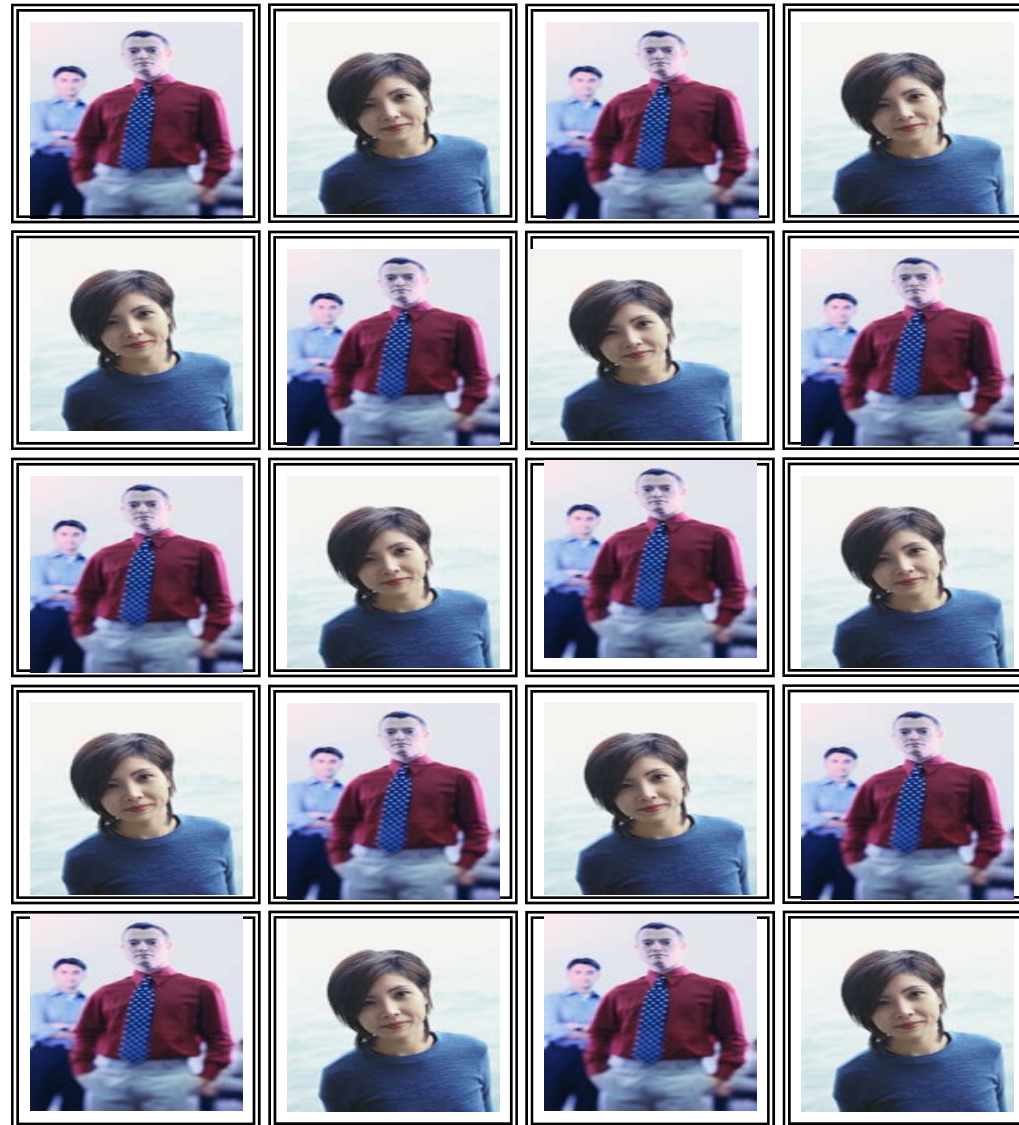
Example Video Display - 2



Example Video Display - 3



Example Video Display - 4



Example Video Display - 5



Colour Wash
Any Colour, Any Monitor

Example Video Display - 6

